

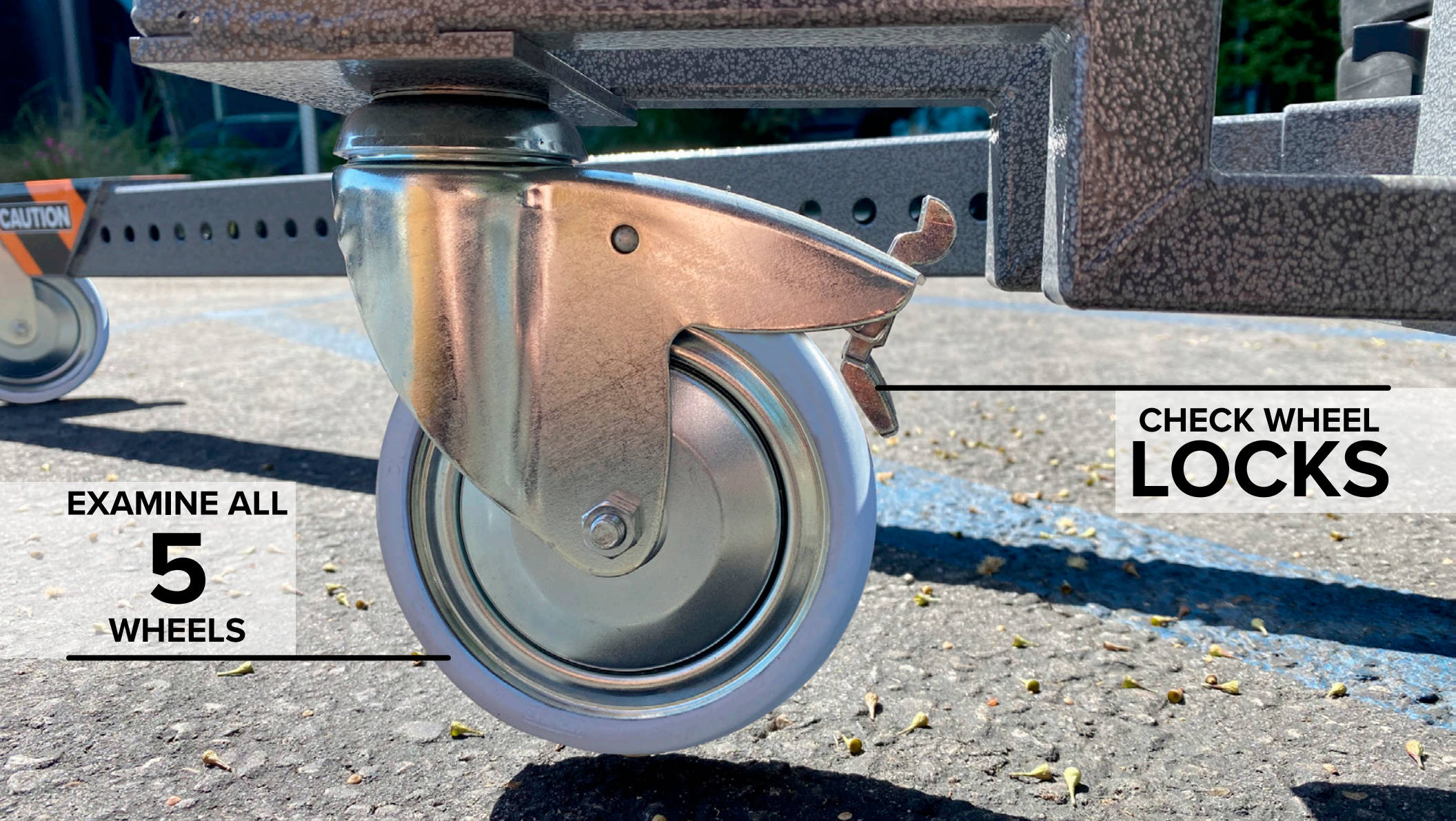


PROPER EXAMINATION OF THE

MAXTM MENACE ARM

IMPORTANT! READ BEFORE USE!

THIS DOCUMENT CONTAINS ESSENTIAL INFORMATION ON HOW TO PROPERLY EXAMINE YOUR MAX MENACE ARM TO ENSURE YOUR SAFETY WHEN IN USE

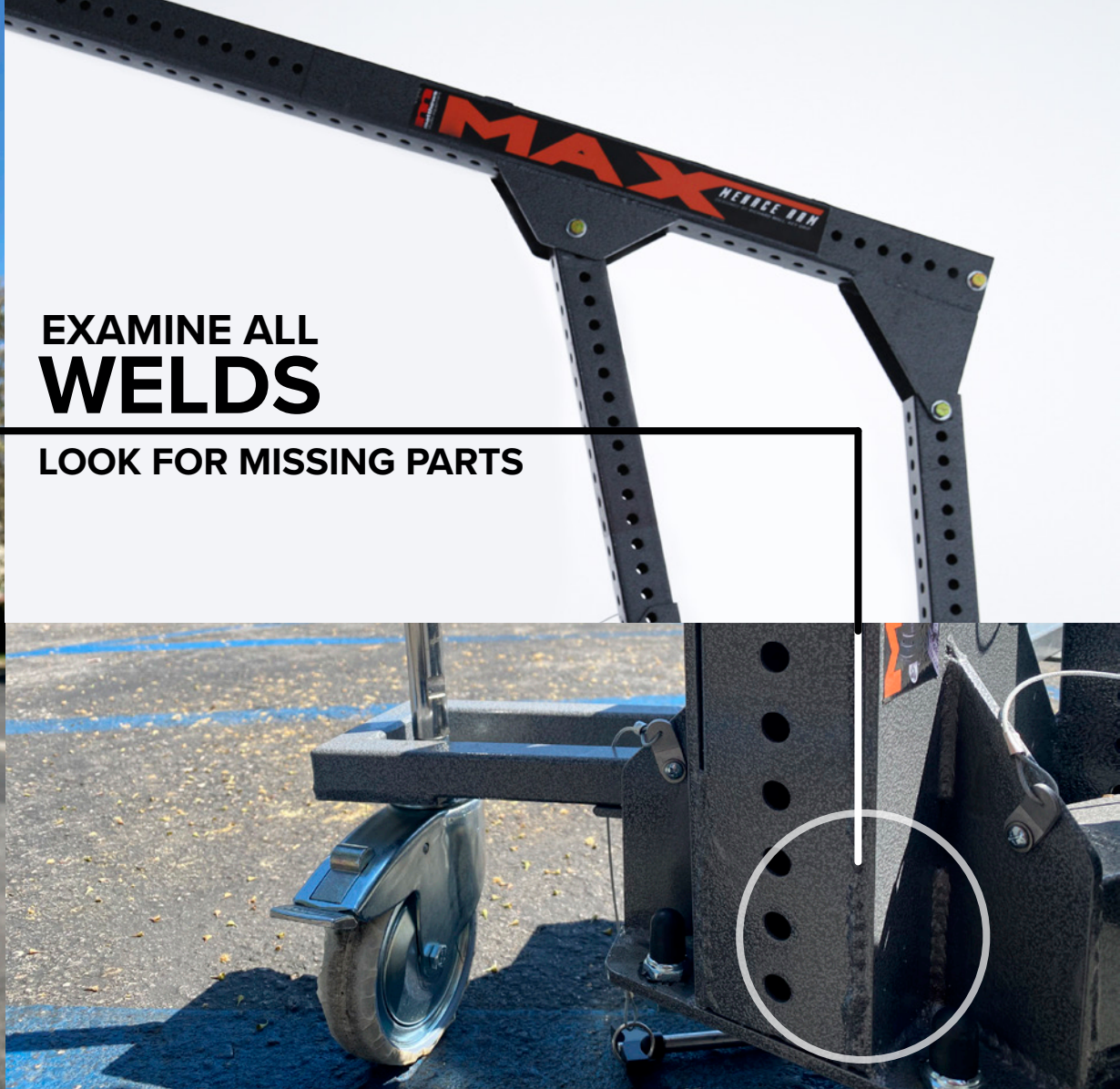


EXAMINE ALL
5
WHEELS

CHECK WHEEL
LOCKS

When first deploying Max a quick walk around should be performed on a daily basis.

- Examine all 5 wheels and look for cracks or missing tread. Do a check of ALL wheels to ensure they are ALL working correctly and confirm their freedom of rotation in both axis.
- Check that the wheel locks are working correctly.



Look over the entire stand for any bent or missing parts.

- If any part is missing try to find it.
- If any part is bent remove the unit from service.

Check all welds for cracks, if any cracks are visible **REMOVE THE STAND FROM SERVICE.**



8 AIRCRAFT PINS



Confirm the placement of all 8 Aircraft pins:

- ① for each leg, ① on the back post, ② on the middle post and ③ stored on the top arm.



SAFETY HOLE



T-HANDLE

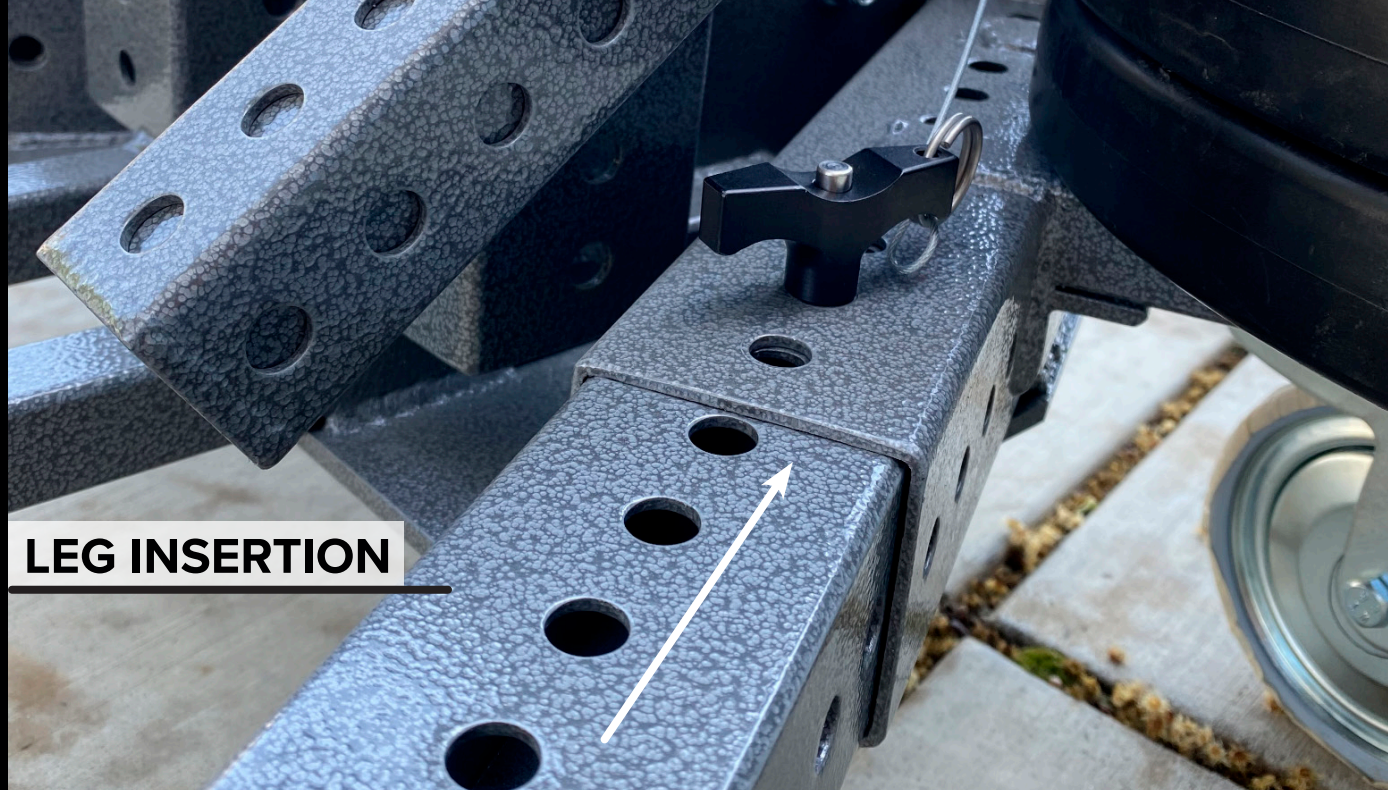
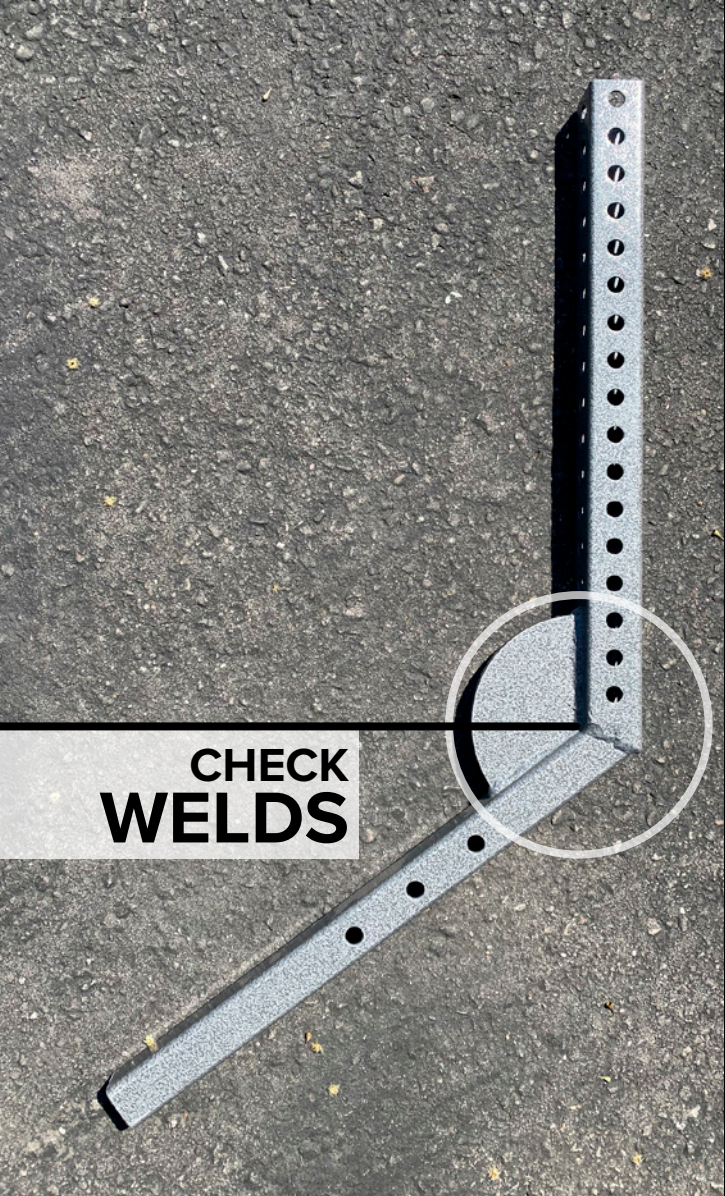


INDENT PINS

Check the combination junior / baby tip and confirm the tip has the proper locking tee handle for the junior receiver and that the baby pin safety hole is clear and can receive a safety cotter pin.

Check to confirm the leveling mechanism at the tip can rotate freely and is lockable.

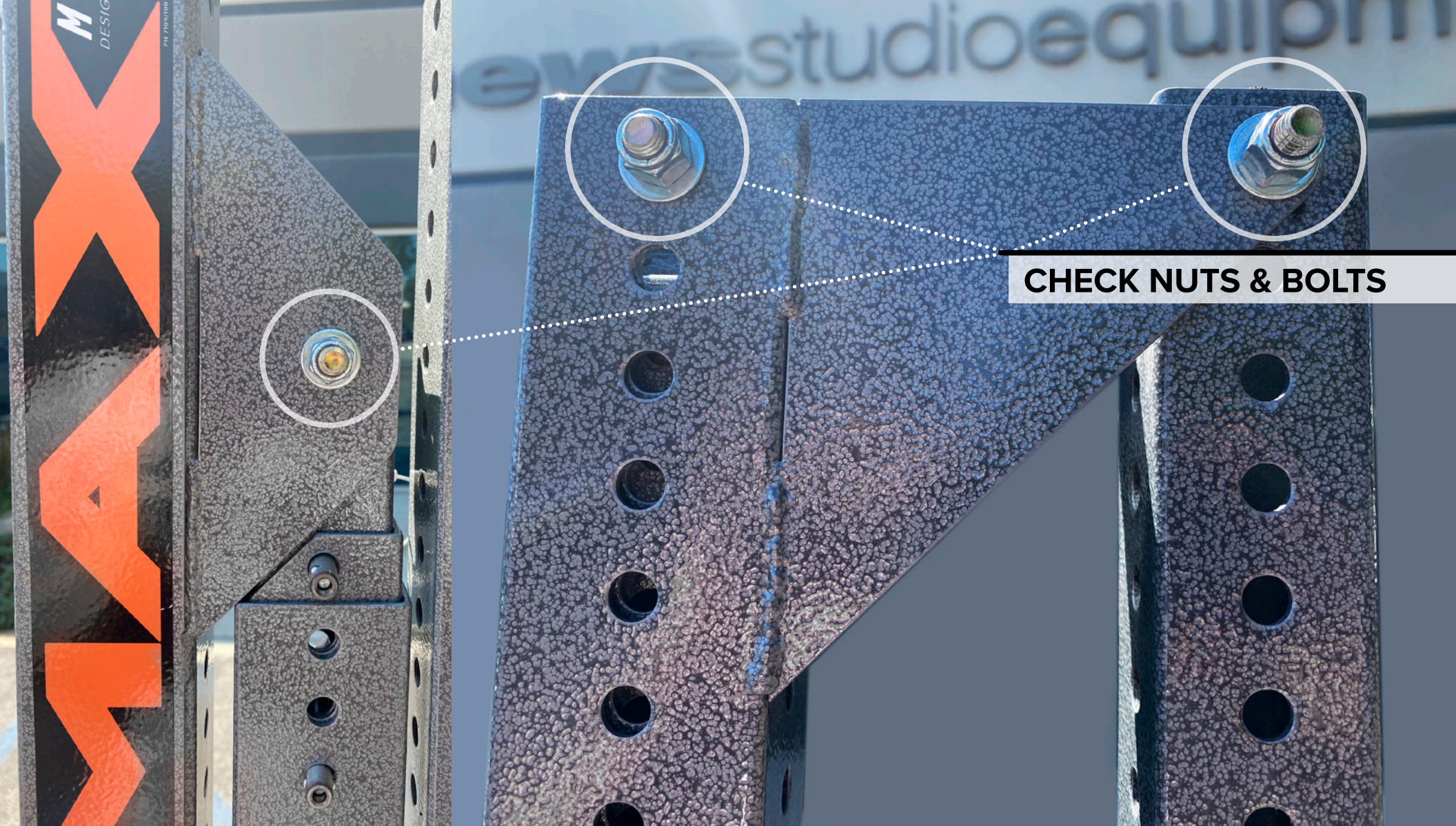
Confirm the indent pins are in place and working correctly on the tip.



Confirm the offset arm is available and look for any bent parts or cracked welds.

When putting the legs into their receivers for deploying Max, make sure the legs can be completely inserted into their receivers and an aircraft pin can be inserted into hole.

- Check the same thing for both legs.
- If either legs can not be inserted completely **REMOVE THE UNIT FROM SERVICE.**



CHECK NUTS & BOLTS

Check to see that all nuts and bolts are in place and secured to the back arm and the middle arm.

- If either nut or bolt is missing **REMOVE THE UNIT FROM SERVICE.**



T-HANDLE



**BABY PIN
TIP**

SAFETY PIN

The locking T-handle on the tip needs to be lined up with the under cut on the lamps Junior Pin.

In addition, ensure the Safety Pin is inserted into the Baby Pin once mounted into the Tip.



EXTEND & RETRACT

Remove the **2** aircraft pins from the middle arm, and attempt to raise the top arm. Confirm that the arm moves freely as it is raised and lowered. Look for any bent parts.

Place the aircraft pins in the middle section without raising the top sleeve above the **RED** Safety marker.

Confirm the top arm **3** sections have their stops in place by attempting to extend the arm until all sections have stopped and can not be removed from the front of the stand. Make sure that the arm is not bent and can be extended and retracted with ease.



SECURE WEIGHT RODS

TURN CRANK

IF FOR WHATEVER REASON THE
CRANK BECOMES HARD TO TURN
OR STOPS, DO NOT FORCE IT AND
TAKE THE UNIT OUT OF SERVICE!



Turn the hand crank and confirm that the mechanism goes up and down smoothly.

Confirm the placement of the weight rods and that the rods are secure over the rear wheels.

THE STAND SHOULD BE COMPLETELY READY TO BE DEPLOYED